

737.28 ft
N. line Sec. 17, T. 6, R. 1, W. 1

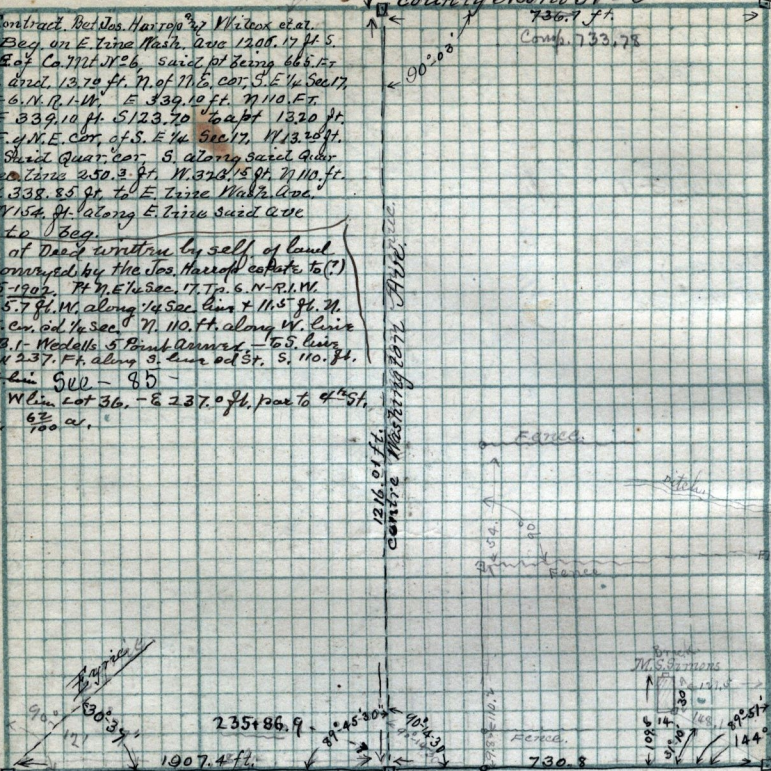
county North No 6

736.9 ft
Comp. 733.78

Contract, Bellos Harrop & White et al.
Beg. on E. line Wash. Ave 120 ft. 17 ft. S.
4.66 ft. E of Co. 7121, N. 26, said pt being 66.5 ft
W. dist. 13.70 ft. N. of N.E. cor. S. E. 1/4 Sec. 17,
T. 6, N. R. 1, W. E. 339.10 ft. N. 110. E. T.
E. 339.10 ft. S. 123.70 ft. 1/2 apt 13.20 ft.
E. of N.E. cor. of S. E. 1/4 Sec. 17, N. 13.20 ft.
to Street Quar. cor. S. along said Quar.
Sec. Line 250.3 ft. N. 32.0/5 ft. N. 110. ft.
N. 338.85 ft. to E. line Wash. Ave.
N. 15 ft. ft. along E. line said Ave
to Beg.

Copy of Deed written by self of land
to be conveyed by the Jos. Harrop estate to (?)
May 25-1902. Pt N. E. 1/4 Sec. 17, T. 6, N. R. 1, W.
Beg. 325.7 ft. W. along 1/4 Sec. line x 11.5 ft. N.
from S. E. Cor. of 1/4 Sec. N. 110. ft. along W. line
Lot 36, Bl. 1 - Middle 5 Point Quarry - to S. line
42.5 ft. W. 237. ft. along S. line of Str. S. 110. ft.
Per: to 5 ch. S. 110 - 85 -
W. St. E. W. line Lot 36 - E 237.0 ft. from to 4 1/2 ft.
to Beg. 6 1/2 ft. at.

Dec. 15 1891
 A 235 + 88.99 cont
 B 20 x 60.59



Total 2607 computed
 to S. E. cor. 12-19-8

123.25 ft. 6 in
 144 ft
 144 ft
 144 ft
 144 ft

Quar. Sec
 Post.
 S. E. Cor.
 N. E. 1/4 S
 17-T-6
 R. 1

Quar. Sec. Stone
 SEE - G-129 -
 Note:
 Centre Sec 17 T. 6 N. R. 1, W.

April 10 11 - 11 1891 -

as corrected + 78.03
 { ctr. 7th Str. = city sta. 220+79.66 -> □
 computed 725.31 ft. W. of E. line Sec. 17

note on Irrigation ditch - 82 ft. E. of S. E. cor. N. E. 1/4 Sec. 17 - centre 2 x 12' ditch. W. N. W.
 341 = center of another ditch same bearing & size.